

REHABILITATION

Industry Principles & Commitments 2017 Results

AN UPPER HUNTER MINING DIALOGUE FACT SHEET



Upper Hunter
Mining Dialogue

Since 2012, the Upper Hunter Mining Dialogue has been collecting annual rehabilitation data and information from mining operations in the Upper Hunter to provide information to the community regarding the amount of rehabilitation activities being undertaken. This project supports the Dialogue's two primary land management goals:

Goal 1 - To decrease the time that disturbed areas are left without final or temporary cover, recognising that different mining operations are at different points in rehabilitation.

Goal 2 - To achieve a consistent level of best practice, quality, integrated rehabilitation – both within the industry and with future land uses - across the Upper Hunter and to be a responsible steward of the land.

The table below outlines the Dialogue's rehabilitation principles and other information sought from industry through this project.

REHABILITATION PRINCIPLES AND COMMITMENTS

- Principle 1** **Include rehabilitation planning in mine planning**
- Principle 2** **Undertake progressive rehabilitation**
- Principle 3** **Minimise time that disturbed areas are left without vegetation**
- Principle 4** **Prioritise areas of rehabilitation and temporary cover to reduce impacts**
- Principle 5** **Meet target for rehabilitation progress identified in the Mining Operations Plan**
- Principle 6** **Set quality targets for rehabilitation in the Mining Operations Plan and implement a monitoring program to measure performance**

Rehabilitation	2017 Result
Total land area disturbed and not yet rehabilitated at the beginning of the reporting period	214.1 km ²
Total amount of land newly disturbed within the reporting period	13.3 km ²
Total amount of land newly rehabilitated within the reporting period	7.6 km ²
Total land area disturbed and not yet rehabilitated at the end of the reporting period	220.3 km ²
Total area of rehabilitation at all operations at the end of the reporting period	123.7 km ²
Annual rehabilitation to disturbance ratio	0.58
Overall proportion of disturbed land rehabilitated	36.0%
Estimate of total land held as biodiversity offsets	417.5 km ²
Estimate of the total area of land managed for agricultural use (e.g. grazing, cropping, viticulture)	593.2 km ²

Local Government Area (LGA) Sizes	
Muswellbrook	3,405 km ²
Singleton	4,893 km ²
Total	8,298 km²
Mining Land Use	
Total mining rehabilitation completed	124 km ²
Total disturbed land awaiting rehabilitation	220 km ²
Total disturbance across Upper Hunter LGAs	344 km²
Other Land Use	
Total agricultural land use	2,432 km ²
Total protected areas (incl. National Parks)	3,106 km ²
Total urban area (Residential, Business and Industrial)	27 km ²

To find out more about the UHMD, visit miningdialogue.com.au

REHABILITATION

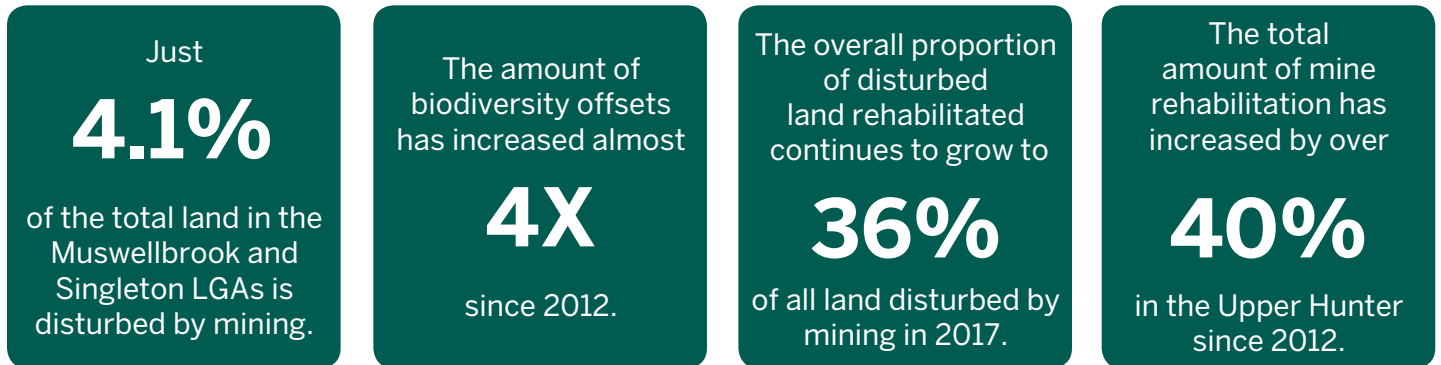
Industry Principles & Commitments 2017 Results

AN UPPER HUNTER MINING DIALOGUE FACT SHEET

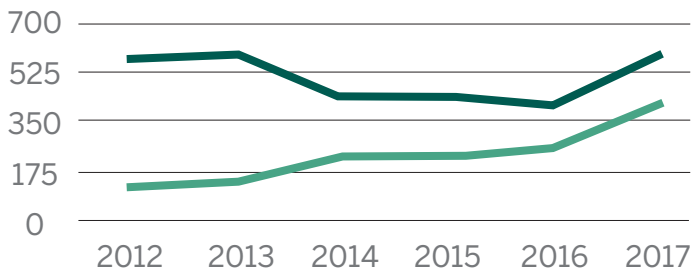


Upper Hunter
Mining Dialogue

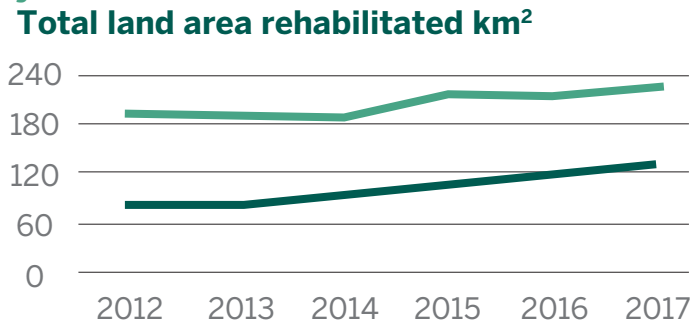
2017 Results and Analysis of Trends



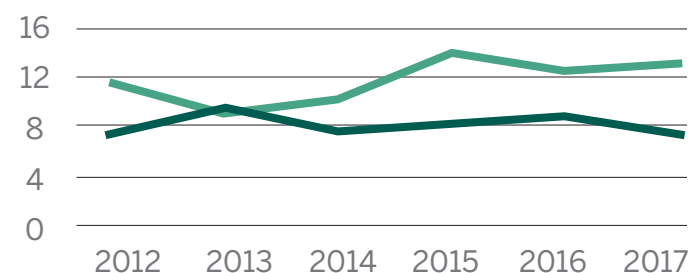
Total biodiversity offsets vs Total managed agricultural land km²



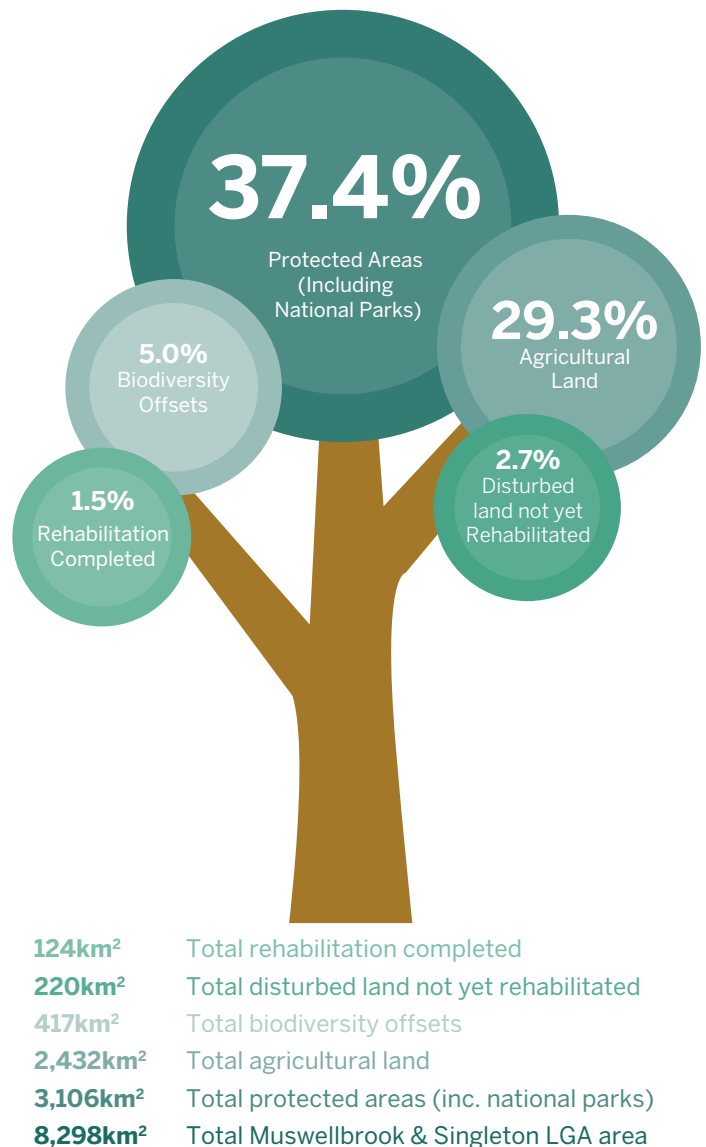
Total land area disturbed and not yet rehabilitated vs. Total land area rehabilitated km²



Total land newly disturbed vs. Total land newly rehabilitated km²



LAND USE IN THE UPPER HUNTER (MUSWELLBROOK AND SINGLETON LGAS)



To find out more about the UHMD, visit miningdialogue.com.au

Industry rehabilitation data for 2017 was kindly provided for this project by Glencore, Yancoal, The Bloomfield Group, BHP, Muswellbrook Coal Company, Peabody Energy, Mount Pleasant Operation, Bengalla Mining Company and Malabar Coal. Contextual information has been sourced from the NSW Department of Primary Industries, Australian Bureau of Statistics, Singleton City Council and Muswellbrook Shire Council.