



**Upper Hunter  
Mining Dialogue**

# Year in Review 2016

Greg Sullivan

Director Policy, NSW Minerals Council

# From the last Annual Forum



- Be more focused - don't try to cover everything
- Involve school students
- Communications Initiatives
- Engage with new people

# Joint Advisory Steering Committee



- JASC is giving community members a role in shaping discussions and direction of the Dialogue
- JASC consists of community members, local business and local government representatives and mining industry members
- Meets 3 times a year
- JASC helped steer UHMD Restructure discussions and identification of future priorities
- JASC has provided significant input into UHMD's current priorities such as rehabilitation and voids, water quality and recent re-survey

# Engaging with school students



- Students from two High Schools represented here today
- Developed a proposal for a comprehensive School Mine Tour program
- Conducted a pilot school tour
- Developing materials to assist with hosting tours



# Communications Initiatives

- Focus on actively promoting the Dialogue and key projects being undertaken to community and industry
- Increasing visibility at regional shows and field days
- Engaging with a variety of local media through television, radio, print media and social media
- Linking with Singleton and Muswellbrook Chambers of Commerce.
- Development of material that is transferable across displays





# Communications Initiatives



The Dialogue has had a busy year delivering key elements of the approved communications plan:

- Displayed and engaged with community members at five major events (8 scheduled in 2017)
- Gathered 200 surveys from members of the community
- Publicised activities with articles/stories in local and Newcastle print media (Argus, Chronicle, Newcastle Herald, @thecoalface), radio (2NM, ABC Radio) and television (NBN)
- Updated the Dialogue website
- Provided updates to members' news
- Hosted journalist tour of Dialogue projects



# Resurvey of UHMD Community Perceptions



- Follows on from previous work done to assess community perceptions of the mining industry
- Reengaging with past Dialogue participants to gather their feedback regarding how effective and useful the Dialogue is
- Conducted by HRF in collaboration with the University of Newcastle
- 40 in depth interviews
- Provides relevant information to enable strategic planning for future activities and direction

## Upper Hunter Mining Dialogue Perceptions Research Program 2016

Ruth McLeod  
Hunter Research Foundation



# Utilisation of the UHMD Resource Centre



- Since 2015, a resource centre has been established in Singleton Town Square Shopping Centre providing a point of contact.
- The resource, Singleton Business Chamber and others utilizing the space







Upper Hunter  
Mining Dialogue

# Joint Working Group Emissions and Health

John Watson

Chair

# Weather Forecasting Project



- Short video (2.5 mins) providing community with information on what happens at a mine site when adverse weather is forecast.
- Industry consistently uses weather forecast information to plan ahead and manage air quality at their operations.
- Measures include postponing blasting, limiting traffic to haul roads, wetting dry areas and ceasing operations until conditions improve.
- Filming expected to begin in 2017 across various member sites.
- Intended to share video on YouTube, UHMD website and through company sites, social media.
- Part of ongoing communications initiatives plan.

# Community Weather Forecasts



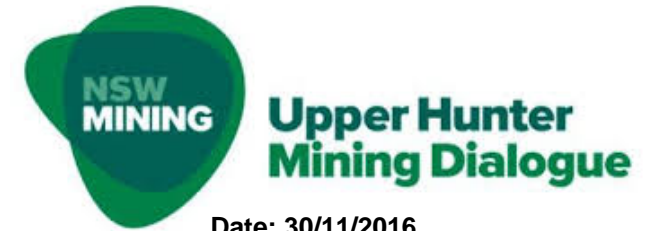
- Written to Minister for the Environment Mark Speakman MP advocating for expansion of air quality forecasts to the Upper Hunter.
- Clean Air for NSW Consultation Paper – What started as a conversation within the Dialogue has evolved into a documented commitment from the NSW government to progress weather forecasting initiatives.
- Joint Working Group Presentations from:
  - Dr. Yvonne Scorgie (Office of Environment and Heritage) - Enhancing Air Quality Forecasting in NSW
  - Emma Coombes (NSW Environment Protection Authority) - Adverse Weather For Dust Generation

# Other E&H Activities



- *Mine Dust & You Factsheet* – This resource required an update and is currently being redrafted by Pacific Environment. Is expected to be finalised in early 2016. Once complete, will be reviewed by NSW Health and EPA.
- *EPA Upper Hunter Air Quality Particle Model* – Briefing from Damon Roddis (Pacific Environment) to Joint Working Group in May 2016.
- *EPA Lower Hunter Particle Characterisation Study and Lower Hunter Dust Deposition Study* – improving knowledge of industry contribution to various sources of air pollution in Upper Hunter.
- Multiple initiatives from Dialogue members entered in the 2016 Health, Safety, Environment and Community (HSEC Awards).

# Regional Air Quality Data



Date: 30/11/2016

	MWA PM10	WYB PM10	ABER PM10	MUS NW PM10	J PLNS PM10	WWTH PM10	M DIEU PM10
<b>Statistics For the last 12 months</b>							
Average	13.5	15.3	15.6	16.6	16.5	18.3	20.1
Median	11.9	13.3	14.5	15.2	14.6	17.1	18.2
Max	41.6	52.1	41.3	44.8	42.9	54.0	63.2
Min	2.6	1.5	2.5	2.4	2.9	3.1	2.4
>50 (PM10)	0	1	0	0	0	1	1
>25 (PM2.5)							

	SIN NW PM10	BULGA PM10	MT THO PM10	SIN STH PM10	MUS PM10	SIN PM10	CAMB PM10
<b>Statistics For the last 12 months</b>							
Average	21.5	15.8	22.3	17.7	19.2	19.0	24.1
Median	18.8	14.3	20.4	16.5	18.6	18.3	21.7
Max	60.5	57.6	84.1	40.3	46.2	60.8	65.7
Min	4.0	2.5	2.9	3.3	4.1	3.8	4.2
>50 (PM10)	3	1	3	0	0	1	11
>25 (PM2.5)							

				MUS PM2.5	SIN PM2.5	CAMB PM2.5
<b>Statistics For the last 12 months</b>						
Average				8.2	7.6	7.4
Median				7.1	6.7	7.0
Max				29.4	27.7	21.1
Min				0.8	0.3	1.8
>50 (PM10)						
>25 (PM2.5)				1	2	0



# Regional Air Quality Data

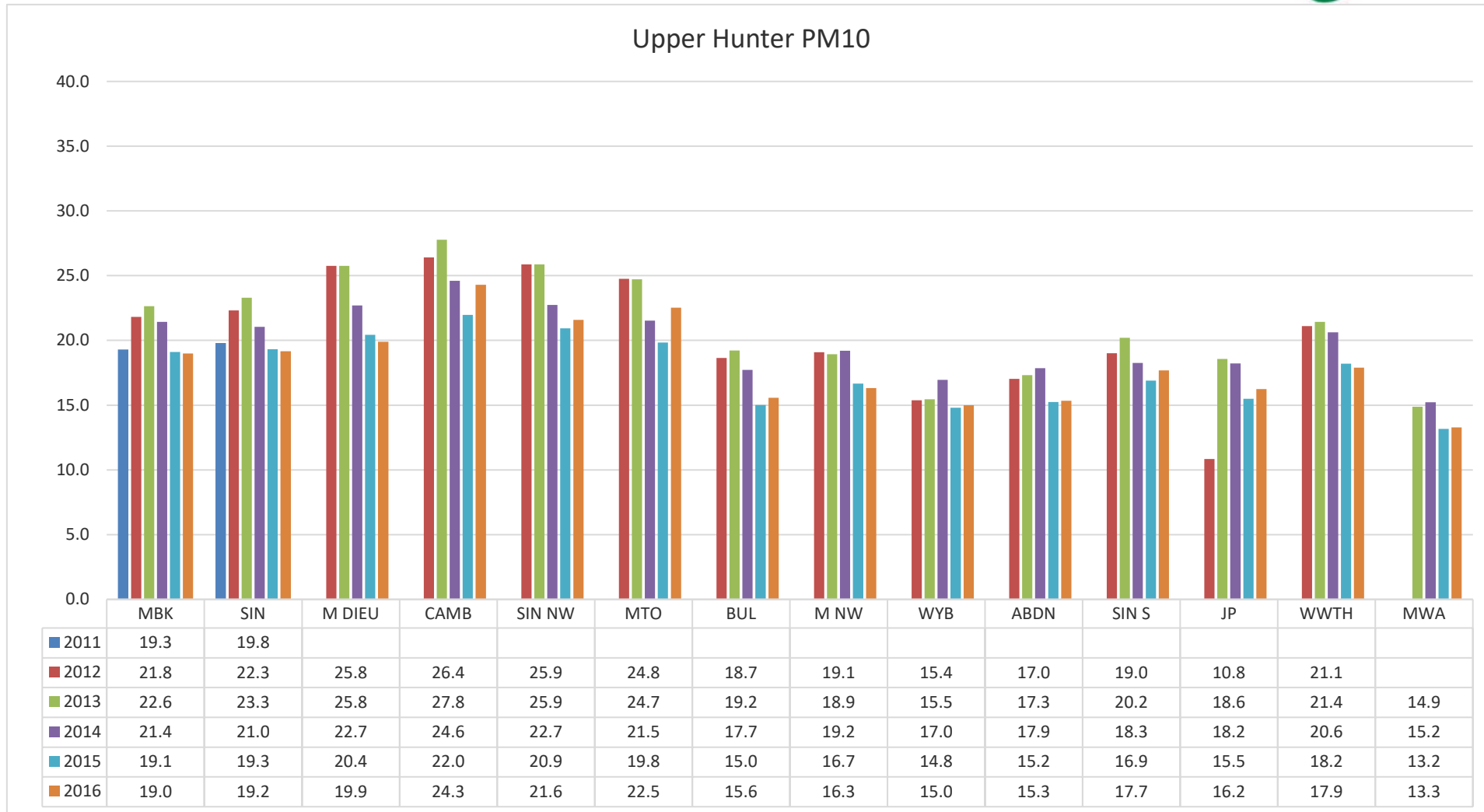


Date: 30/11/2016

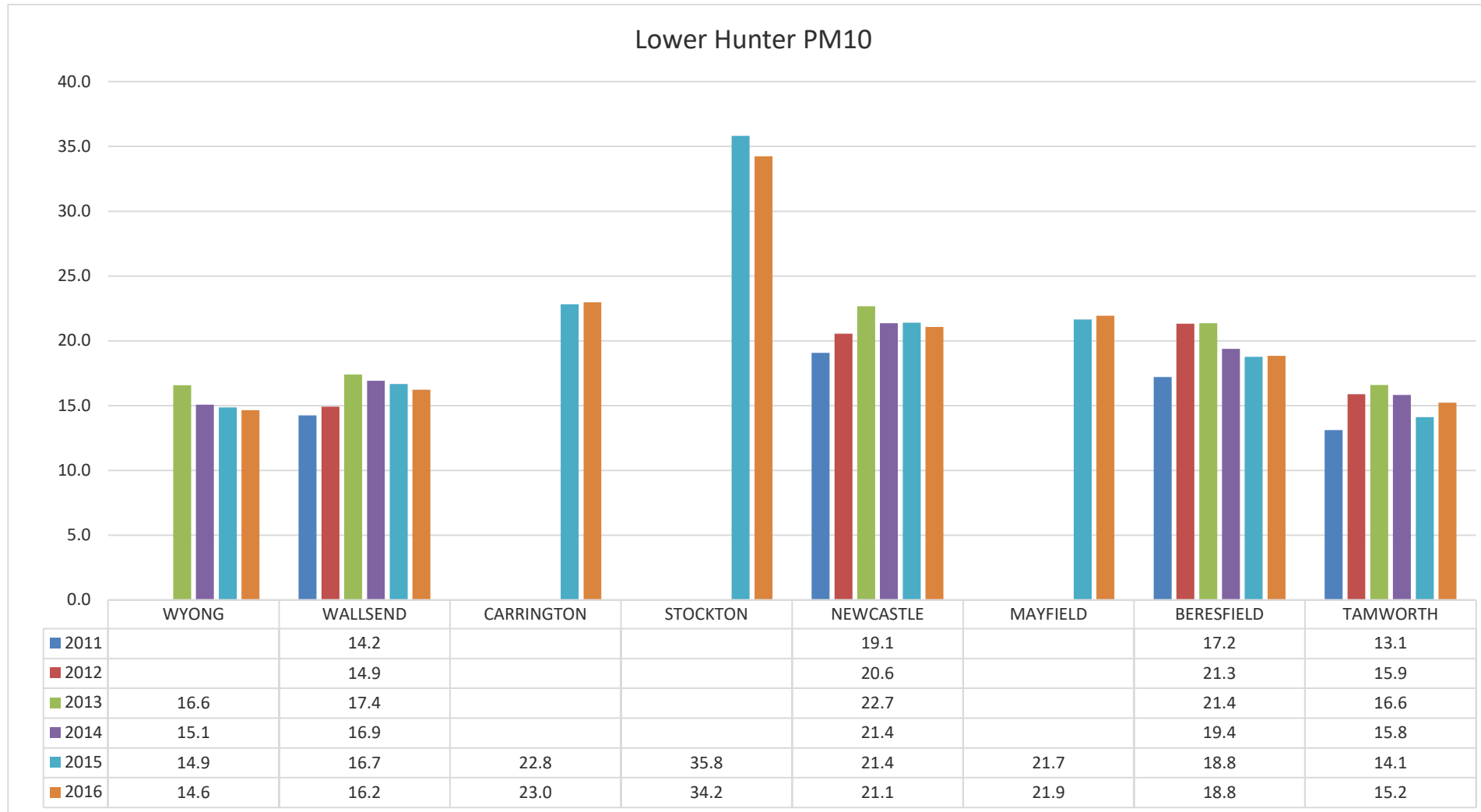
	BER PM10	WALL PM10	MAY PM10	CARR PM10	NEWC PM10	STOCK PM10	WYG PM10
<b>Statistics For the last 12 months*</b>							
Average	18.9	16.5	22.3	23.3	21.4	35.1	14.9
Median	17.6	15.3	20.8	22.4	20.8	33.5	13.3
Max	48.0	65.5	84.1	95.4	89.1	108.1	46.0
Min	3.1	3.1	2.9	4.5	4.5	7.7	2.3
>50 (PM10)	0	1	1	2	1	58	0
>25 (PM2.5)							

	BER PM2.5	WALL PM2.5	MAY PM2.5	CARR PM2.5	NEWC PM2.5	STOCK PM2.5	WYG PM2.5
<b>Statistics For the last 12 months*</b>							
Average	7.2	8.0	7.4	8.4	7.7	9.5	5.6
Median	6.7	7.2	6.4	7.5	7.0	8.6	5.1
Max	27.9	50.7	57.9	70.0	66.1	66.4	19.8
Min	1.9	2.2	0.9	2.1	1.7	2.9	1.2
>50 (PM10)							
>25 (PM2.5)	1	1	2	1	1	1	0

# Regional Air Quality Data



# Regional Air Quality Data



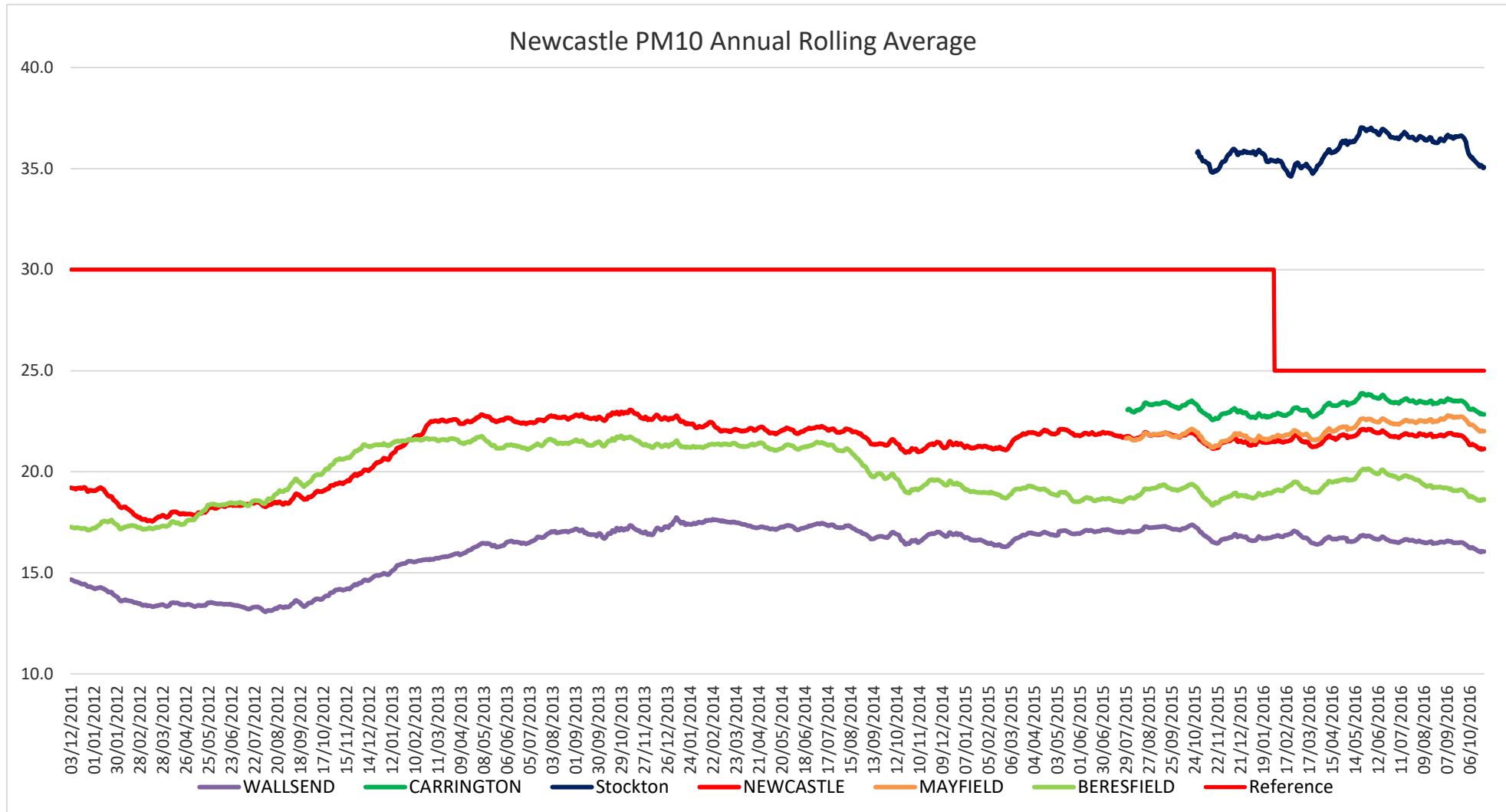
# Regional Air Quality Data



Upper Hunter PM10 Annual Rolling Average

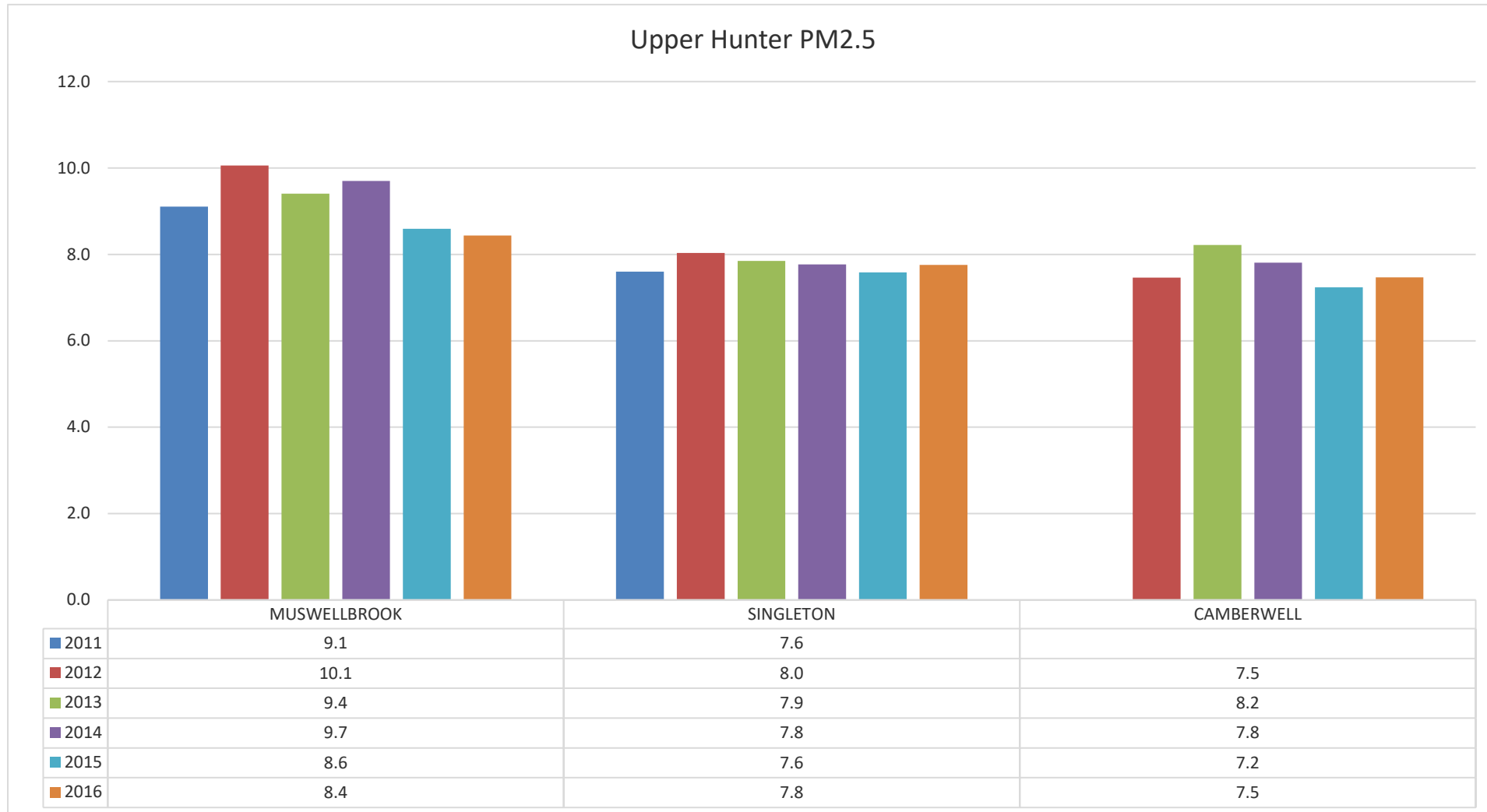


# Regional Air Quality Data

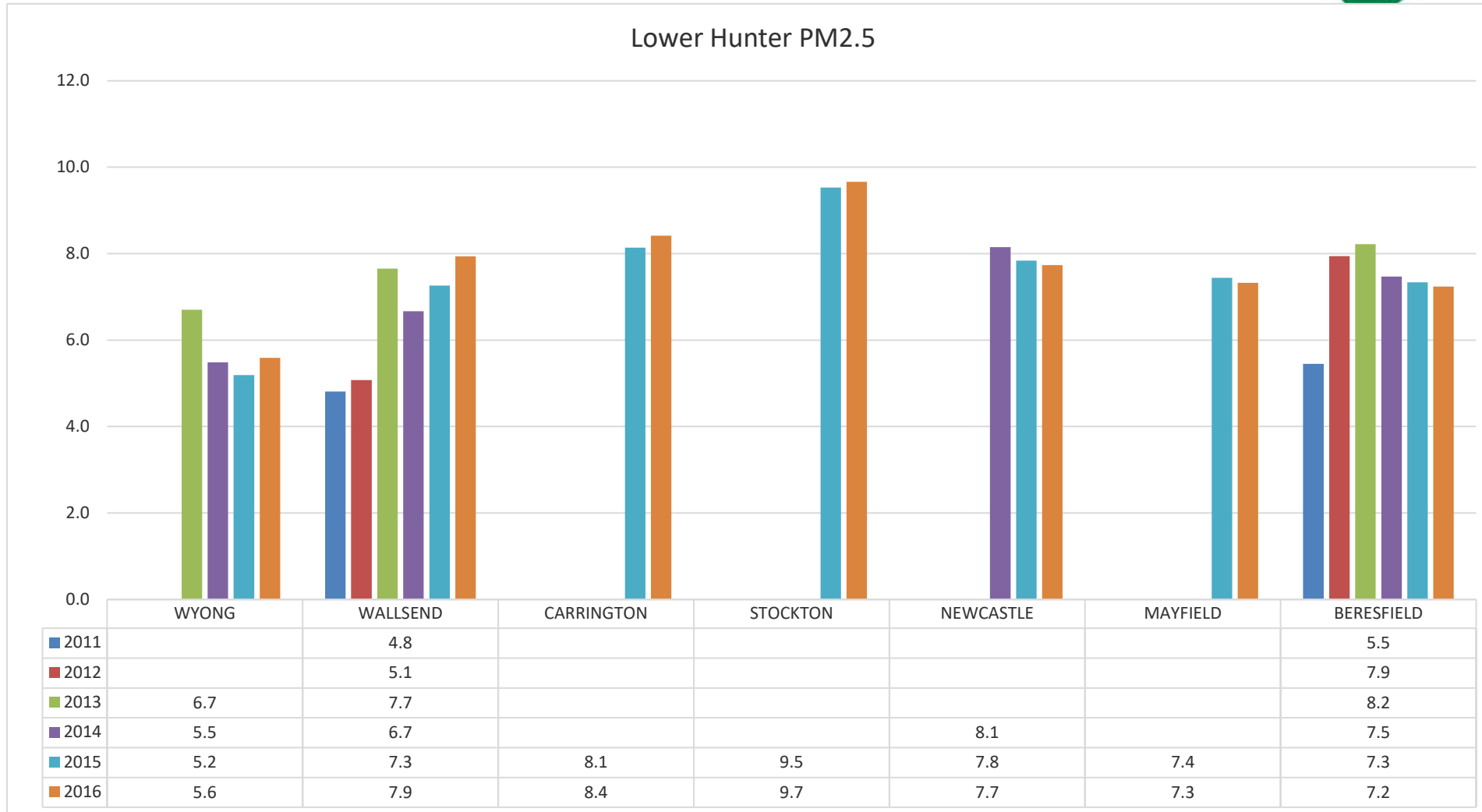




# Regional Air Quality Data



# Regional Air Quality Data





Upper Hunter  
Mining Dialogue

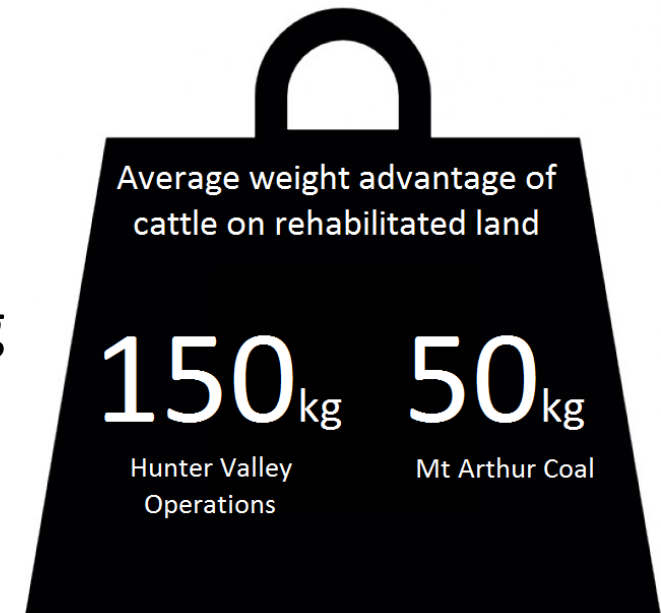
# Joint Working Group Land Management

Bill Baxter

Chair

# Grazing Study Trials

- The purpose of the study was to determine whether rehabilitated mine land can be returned to a productive and sustainable grazing standard.
- Results from the first batch of steers showed an advantage in weight, fat cover and value to steers grazing the rehabilitated mine site.
- First stage is complete, stage two is now underway.
- Ends in mid-2017, looking at further opportunities to expand study, or engage in follow up work.
- Recent site visit by Newcastle Herald's Ian Kirkwood for future story.



# Grazing Study Trials





# Rehabilitation and Voids



- *Beneficial reuse of voids reports* – release of literature study and workshop reports. Scope for Dialogue to consider ongoing work in this area.
- Continued advocacy for synoptic plan refresh, in addition to interest in forming multi-stakeholder voids committee to look at post-mining void use in 40 plus years.

# Rehabilitation Reporting



- Continued commitment from industry to publicly release rehabilitation figures for Upper Hunter mining operations and be accountable for their actions.
- 2014 figures released in March 2016.
- 2015 published December 2016.
- 2016 figures – to be collected early 2016.
- Results show a consistent level of rehabilitation being undertaken across the Upper Hunter each year since 2012, despite difficult economic conditions and increased activity.



**Upper Hunter  
Mining Dialogue**

# Joint Working Group Water

David O'Brien

Chair

# Water Accounting Framework



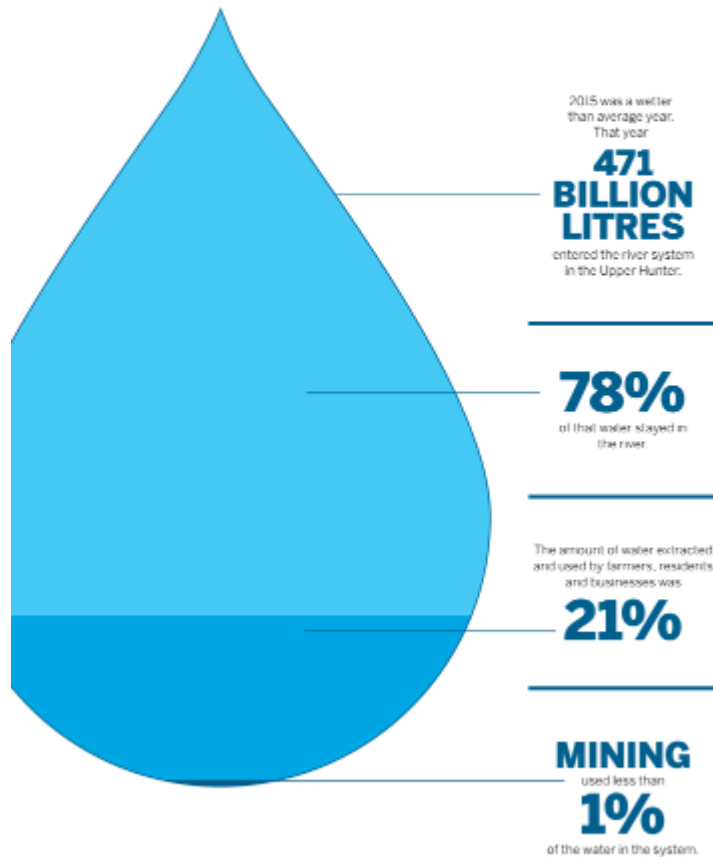
- Water Accounting Framework 2014 and 2015 results launched in December 2016.
- First of its kind report in NSW.
- Example of industry working collaboratively to deliver timely and relevant information to and for the community.
- Shows water usage figures for the mining industry in the Upper Hunter.
- Water used by Upper Hunter operations reduced from 3% of the total water in the Hunter River in 2014 to just 1% in 2015.

# Water Accounting Framework



## THE HUNTER RIVER 2015

A precious water resource for the Upper Hunter community.

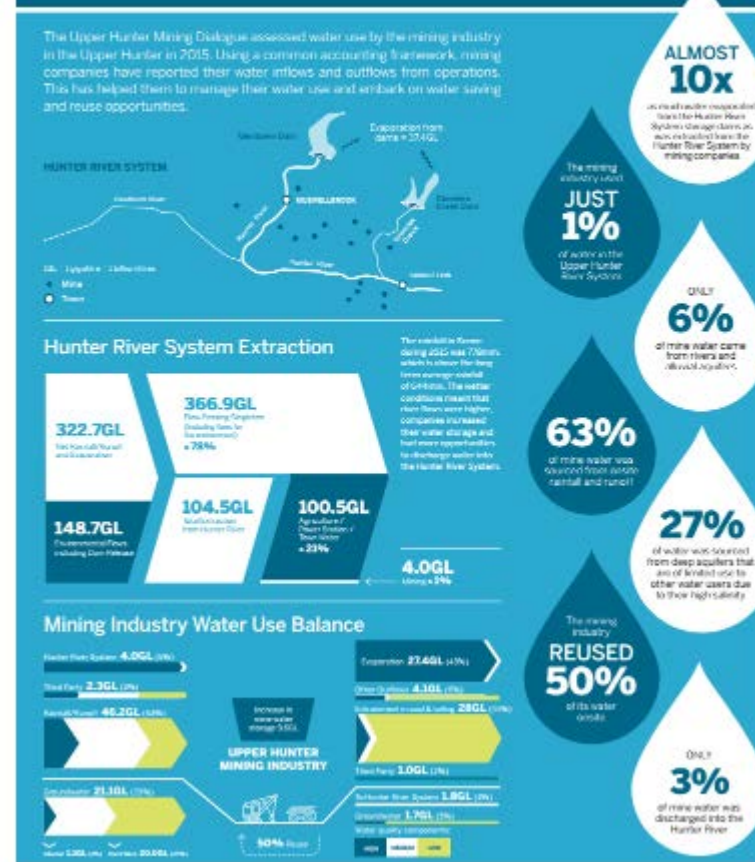


To find out more, visit [miningdialogue.com.au](http://miningdialogue.com.au)

The NSW Minerals Council has compiled the data in this infographic using the best available information. Since water accounting is a complex task that relies on estimates and computer models, there are corresponding limits to the accuracy of the information. Sources: Bureau of Meteorology; DPI Water; NSW Minerals Council data.

## UPPER HUNTER WATER BALANCE 2015

Mining's water use



To find out more about the UHMD, visit [miningdialogue.com.au](http://miningdialogue.com.au)

The NSW Minerals Council has compiled the data in this infographic using the best available information. Since water accounting is a complex task that relies on estimates and computer models, there are corresponding limits to the accuracy of the information. Sources: Bureau of Meteorology; DPI Water; NSW Minerals Council data.

2015 Water Accounting Framework infographics

Left: Simple infographic with high level figures.

Right: Detailed breakdown of water usage.



# Hunter River Water Quality Assessment Project



- Builds upon Dialogue advocacy regarding the Hunter River Salinity Trading Scheme
- Dialogue is evaluating the possibility of a study that will look into the background concentration of metals in Upper Hunter.
- The study will provide a clear understanding of environmental risk and determine exactly what metals exist in the Hunter River and at what levels through a preliminary analysis of 13 key discharge points of coal mines.
- A proposal has been requested from Dr. Richard Bush, International Centre for Balanced Land Use, The University of Newcastle.

# Government Water Resources



- Dialogue members are providing input and engaging with state and federal government departments to ensure the resources developed are accurate and relevant to stakeholders:
  - ❑ *Common Ground* – This resource maps various environmental data over layers. In the mid 2016 review, the JWG provided feedback relating to water titles that would form another layer. These changes are to be implemented and updated shortly.
  - ❑ *Bioregional Assessment Program* – Industry members attended a workshop in September and through Dialogue discussions have assisted industry in providing feedback to enhance the usability of the resource.



Upper Hunter  
Mining Dialogue

# Future Plans for the UHMD

Small group discussion



**Upper Hunter  
Mining Dialogue**

# Plenary Discussion

Di Sneddon

Facilitator



# Summary and Thanks

John Richards  
Chair, UHMD



Upper Hunter  
Mining Dialogue

# Thanks for attending

Please complete Forum survey